

SUCCESS STORY

High-Tech Farming

Modern technologies are making their way into agriculture and farm management. Growlink's IIoT solution, based on Revolution Pi, features a scalable, secure and global architecture to make farms of all types and sizes smart and future-proof.

Digital solutions not only increase the efficiency of businesses, but also improve the CO₂ footprint. The investment costs remain within a manageable framework. At the same time, it is possible to meet the constantly growing customer requirements and stay one step ahead of the competitors.

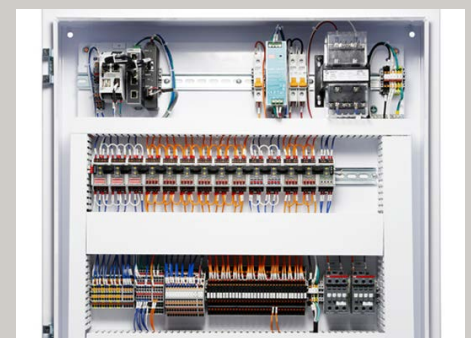
The US tech company **Growlink** specialises in making automated hydroponic growing systems easy for everyone. The focus is on well-designed, tightly integrated hardware and software solutions allowing the indoor agriculture process to be observed, monitored and controlled from anywhere and anytime.

As a controller, our RevPi Connect is used in a specially customised OEM version for Growlink and centrally manages the complete automation system of a farm. The device is sold under the name "Growlink Core" and ensures that all analog and digital I/O modules within the farm work together – from (artificial) lighting and HVAC to irrigation and feed systems and pretty much anything else in-between. High-resolution data is collected, sent to the cloud and stored there forever. The custom image is binding to the Growlink Core API. The device supports wireless connectivity and can be interfaced with a wide range of expansion modules. There is also the

option to configure the Growlink Core as an access point so that mobile phones and tablets can directly connect to accessing critical functions.

OEM Brand Labeling

Would you like to have a custom Revolution Pi just like Growlink? No problem, we have put together three predefined packages that you can find at <https://revolutionpi.com/customization/>. Depending on the option you choose, we print your logo, adapt the device colour to your corporate identity and flash your own software image. This means you don't have to spend your valuable time on hardware development and can instead concentrate on your main business and core competence, which in turn shortens the time-to-market of your own solution – a classic win-win situation.



Module used



REVOLUTION PI

Web revolutionpi.com
E-mail info@kunbus.com



[linkedin.com/showcase/revolution-pi](https://www.linkedin.com/showcase/revolution-pi)